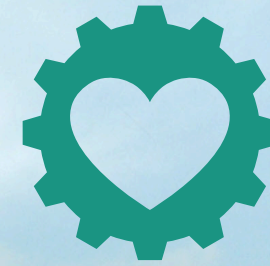


The IHTC envisions a network of trails

that stretch from the shores of Lake Erie to the confluence of Three Rivers in Pittsburgh and on to the Ohio River and the Appalachian foothills of West Virginia. This connected off-road trail system will allow locals and visitors to explore the small towns, major cities, historical sites, rivers and mountains that characterize America's first frontier. In this region, one discovers the birthplace of America's industrial revolution.

Working Together to Connect the Region's Shared-Use Trails

4 States | 51 Counties | 1,500+ Miles



**Industrial
Heartland
Trails**
COALITION



What Is the IHTC Doing?

IHTC members are working to build trails and fill in gaps in the network vision, as well as maintain the trails already on the ground.

Key additional components of the coalition's work include the collection of GIS information and development of an interactive mapping tool, gototrails.com, by Pennsylvania Environmental Council, Rails-to-Trails Conservancy's development of a trail traffic modeling system to track usage on trails and a series of economic impact studies to measure the benefits of major completed trails.

If you want to learn more about participating in the IHTC, please contact:

Rails-to-Trails Conservancy
Eric Oberg, Director of Trail Development
Midwest Regional Office
eric@railstotrails.org

National Park Service, RTCA
Andrea Irland
Outdoor Recreation Planner
andrea_irland@nps.gov

Pennsylvania Environmental Council
Frank Maguire, Program Director
Trails and Recreation
fmaguire@pecpa.org



**Industrial
Heartland
Trails**
COALITION

IHeartTrails.org

The Vision of the Industrial Heartland Trails Coalition (IHTC) is to establish the Industrial Heartland as a premier destination offering a 1500-mile-plus multi-use trail network experience.

Trails Make a Difference ...

Connecting Our Region

The IHTC's 1,500-mile-plus network will span 51 counties across parts of four states: Western Pennsylvania, northern West Virginia, eastern Ohio and the southwestern corner of New York. Pittsburgh will serve as the network's hub, with trails radiating out of the metro area and connecting to Cleveland, Akron and Ashtabula in Ohio, Morgantown and Parkersburg in West Virginia, and Erie in Pennsylvania. These are communities with a shared past, present and future: of innovation, steel, agriculture, manufacturing, boom, bust, reinvention, renewal and innovation once more.

The IHTC will work to develop the missing segments of these major trails and complete the trail network by 2033.



Transforming Local Economies

This new collective energy is driven in part by a realization that the network vision means new economic opportunity and vitality across the region. Trails increasingly demonstrate their significance in community transformation through economic activity by trail users, including visitors and locals. The latest study along the 150-mile Great Allegheny Passage demonstrates an annual \$50 million direct economic impact to communities along the trail. The 24-mile Three Rivers Heritage Trail in Pittsburgh, a system more frequented by residents, generates a \$7 million annual economic impact. Trails can be an important economic stimulus in communities large and small across the Industrial Heartland.



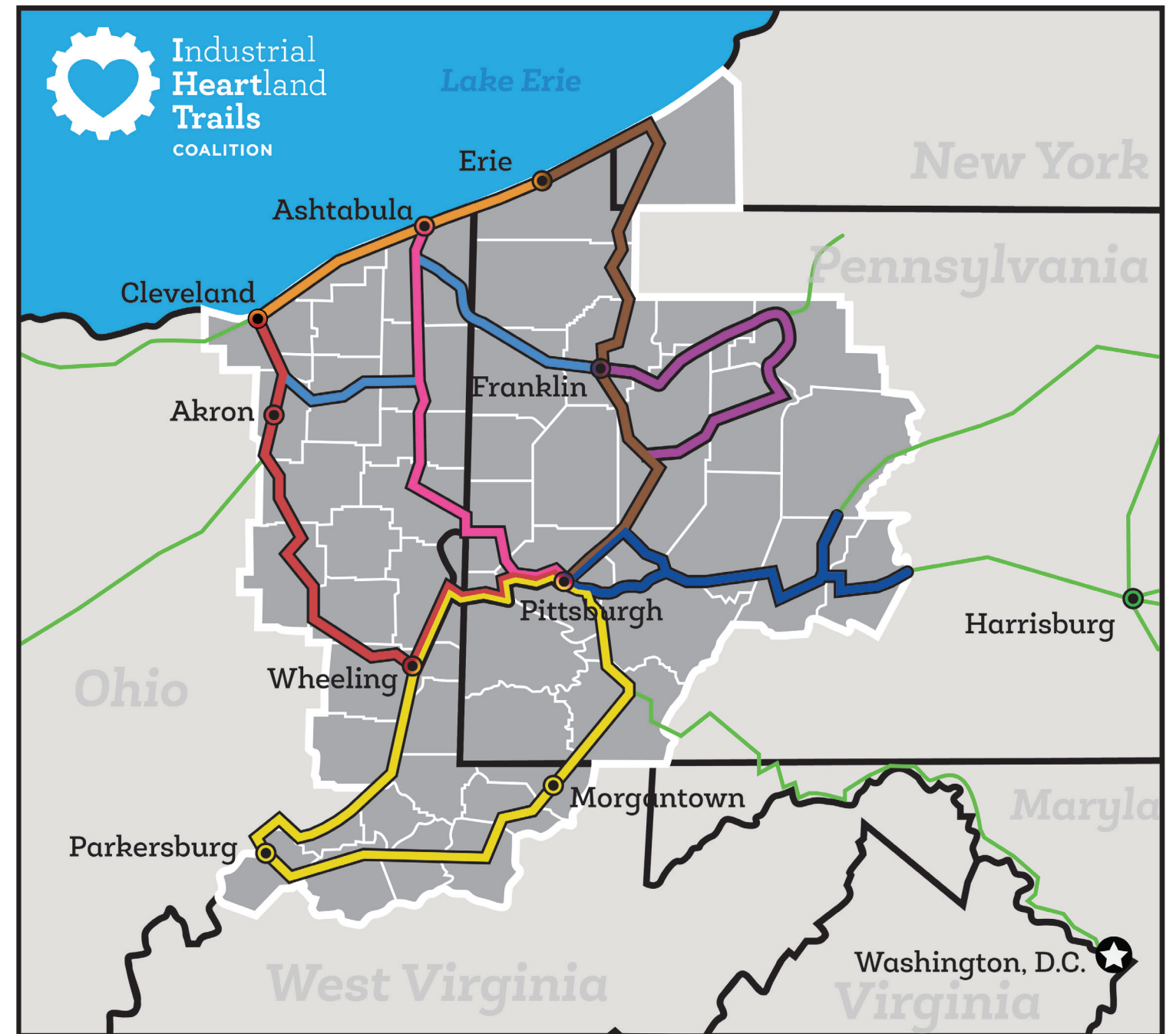
Collaboration for Change

More than 100 agencies and organizations that are actively planning and building trails have participated in IHTC meetings.

This coalition of trail supporters includes government, nonprofit and private foundation entities, as well as land managers and railroad interests, all working together to position trail development as a regional priority.

The Pennsylvania Environmental Council, National Park Service Rivers, Trails and Conservation Assistance Program (RTCA) and Rails-to-Trails Conservancy, have been key coordinators of this diverse group.

For a complete list of coalition members, visit: ihearttrails.org/about/who-we-are/



Mega Corridors and Major Trails of the Industrial Heartland

- ERIE TO PITTSBURGH TRAIL CORRIDOR**
 - Great Lakes Seaway Trail - PA
 - Chautauqua Rails to Trails - NY
 - Corry Junction Greenway Trail - PA
 - East Branch Trail - PA
 - Queen City Trail - PA
 - Oil Creek State Park Recreational Trail - PA
 - McClintock Trail - PA
 - Oil City Trail - PA
 - Samuel Justus Trail - PA
 - Allegheny River Trail - PA
 - Armstrong Trail - PA
 - Three Rivers Heritage Trail - PA
- ASHTABULA TO PITTSBURGH CORRIDOR**
 - Western Reserve Greenway - OH
 - Mill Creek MetroParks Bikeway - OH
 - Little Beaver Creek Greenway Trail - OH
 - Three Rivers Heritage Trail - PA
- PENNSYLVANIA - OHIO CONNECTOR**
 - Mercer County Trails - PA

- CLEVELAND TO PITTSBURGH CORRIDOR**
 - Ohio and Erie Canalway Towpath Trail - OH
 - Wheeling Heritage Trail - WV
 - Brooke-Pioneer Trail - WV
 - Yankee Trail - WV
 - Panhandle Trail - PA/WV
 - Montour Trail - PA
 - Three Rivers Heritage Trail - PA
- PA WILDS LOOP CORRIDOR**
 - Allegheny River Trail - PA
 - Armstrong Trail - PA
 - Sandy Creek Trail - PA
 - Clarion Highlands Trail - PA
 - Rail 66 Country Trail - PA
 - Clarion Little Toby Creek Trail - PA
 - Five Bridges Trail - PA
 - Redbank Valley Trails - PA
- C2P - A2P CONNECTOR**
 - Summit County Hike & Bike Trail - OH
 - Portage County Hike & Bike Trail - OH

- PARKERSBURG TO PITTSBURGH CORRIDOR**
 - North Bend Rail Trail - WV
 - Harrison North Rail Trail - WV
 - West Fork River Trail - WV
 - MCTrail - WV
 - Mon River Rail Trail - WV
 - Sheepskin Rail Trail - PA
 - Three Rivers Heritage Trail - PA
- CLEVELAND TO ERIE CORRIDOR**
 - Cleveland Lakefront Trail - OH
 - Great Lakes Seaway Trail - PA
- TRANS ALLEGHENIES CORRIDOR**
 - Apollo's Kiski Riverfront Trail - PA
 - Roaring Run Trail - PA
 - West Penn Trail - PA
 - Ghost Town Trail - PA
 - Path of the Flood Trail - PA
 - Lower Trail - PA
 - Westmoreland Heritage Trail - PA