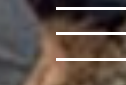




# BRITE WINTER BRITE TEAM



## BOARD OF DIRECTORS

### JONATHAN DOMINY

*Chair of the Board*

Jon works in the financial services industry in Cleveland. He became involved with Brite after attending several years ago, and his goal is to bring Bruce Springsteen and the E Street Band to Brite. In his spare time, he enjoys spending time with his wife and three young kids and gardening.

### DAN BOLLINGER

Dan is an attorney at Eaton Corp., and a lifelong lover of music. He serves as a board member and Treasurer of Chamberfest Cleveland, and is the President of the Cleveland Counsel on World Affairs' Young Professionals Advisory Committee. Dan brings additional experience to Brite from his time in military service in Afghanistan. He serves on the governance committee for Brite Winter.

### ROB BUMM

Rob works in Global Supply Chain with Sherwin-Williams and has a passion for education, music, and technology. As a native Clevelander and father of two, Rob is a passionate supporter of his hometown, from its long-suffering sports teams to its vibrant arts and culture scene. He especially loves Cleveland's live music scene and can often be seen supporting its many music venues.

### HANNAH CALDWELL

Hannah is a lifelong Clevelander and proud resident of Cleveland's Ohio City neighborhood. She earned her law degree at Case Western Reserve University and works as an attorney in Thompson Hine LLP's Labor & Employment practice group. In 2022, Hannah was selected to Crain's Cleveland Business 20 In Their Twenties and recognized as a "Pro Bono Hero" by the Cleveland Metropolitan Bar Association for her work serving as an access point to the justice system for marginalized people in our community. Off the clock, Hannah loves to travel, garden, and enthusiastically support Cleveland's booming music and culinary scene with her family and friends.

### NICK FAEHNLE

Nicholas' strategy for approaching design is experiential understanding, and critical analysis of requirements and goals. Using design strategy and artistic creativity, Nicholas strives to create a coherent and unique plan for addressing the needs of the project. Through time spent in the profession, studies, travel, and in interdisciplinary work, Nicholas has immersed himself in a larger cultural experience that has shaped and influenced his critical thinking. Nicholas' dedication to the art and craft of design enables him to engage on a variety of project types and scales. With over 15 years of architecture, planning, interior, fashion, and project management experience, Nicholas has had the opportunity to complete cultural, corporate, retail, conceptual, residential, and theoretical works on a global scale.

### JUL GREEN (HUNTLEY)

Jul is a diverse musician from Cleveland, Ohio with styles that range from Pop-Rock, Hip-Hop, and Jazzy acoustic. Growing up in a musical family led him to develop a passion for the art at a young age. This passion would later drive him to receiving his B.A. in music from The University of Akron and also to start his solo and group projects under the name Jul Big Green. Through his music he conveys a positive message to his listeners while also giving them an enjoyable musical aspect. While he reaches to younger generations, his diverse arrangement of songs pulls in an even more diverse group of people.

### SHELLY NOREHAD

*Chair, Programming Committee*

Shelly is the owner of School of Rock Cleveland, which empowers students of all ages to learn and perform music. The school currently operates at three locations; Highland Heights, Strongsville, and Westlake. In 2003, Norehad helped found OutRun Ovarian Cancer, a volunteer-driven organization dedicated to raising awareness and donations for research and education in Northeast Ohio. As a Brite Winter board member, Norehad brings years of experience as a financial analyst and a burning passion for the local music industry.

### MORGAN PASSEK

*Chair, Marketing and Outreach Committee*

Morgan is proud Cleveland native who is passionate about art, music, and enriching the Cleveland community. She is a marketing professional working in Downtown Cleveland with experience in social media marketing and event management. Morgan came into the Brite Winter scene as a marketing committee member in 2015 and joined the board in 2016 spearheading marketing and social media efforts. You can also find her getting messy at the Brite public art workshops.

### LISA VINCIQUERRA

Lisa is the Director of Production and Live Events at the Rock & Roll Hall of Fame. She has been booking the museum's programs and live music for over 20 years. She has created and spearheaded many live music concert series including MTV's Live at the Rock Hall, Miller's Craft interview and concert series, Fortune Magazine's Battle of the Corporate Bands and Sonic Sessions to name a few. In addition, she has served as stage manager for several major festivals including Bonnaroo, Electric Forest, Firefly, Forecastle and more. Lisa is an avid live music junkie and is a huge supporter of the Cleveland music scene.

### JIMMY HARRIS

*Board Member Emeritus*

Jimmy is a founding member of the Brite Winter team and got his Ph.D. at Case Western Reserve University. He is currently lives in the San Francisco Bay Area, but returns to Cleveland any chance he gets for Brite-related business.

### DONALD BULEA

*Board Member Emeritus*

Doni is a father, husband, attorney, music enthusiast, and long time lover and founding founding member. He's been working with Brite to shine a light on northeast Ohio's kick ass arts and culture for more than 12 years and enjoyed every moment, from procuring insurance and drafting contracts to shoveling snow, building installations, and watching live music from backstage in 11 degree weather.

## STAFF

### EMILY HORNACK

*Co-founder and Executive Director*

Emily is a founding member of the Brite Winter team. She was born and raised in Cleveland, left for a while, then came back home to stay. She's a graduate of Case Western Reserve University and works at MetroHealth. She also serves as adjunct faculty in Baldwin Wallace University's Arts Management program. Emily has extensive board experience, ranging from serving as a Vice-Commodore for a sailing club to starting small neighborhood music festivals. Emily also has a Master's in Public Policy with a focus on non-profit management.

### BRIAN HORSBURGH

*Festival Director*

Brian was born and raised on Cleveland's east side. He graduated from the University of Denver with a BS/BA in Business Management and a minor in Business Ethics and Legal Studies. He is the founder of **Spindrif Management** and works on a number of non-profit and community events around the city. Brian serves on Hawken School's Alumni Board and the ad-hoc committee of Cleveland Leadership Center's (i) Cleveland program. In 2014, he was recognized by Cleveland Professional 20/30 Club as one of the top professionals under 35 years old. Brian resides in the Detroit-Shoreway neighborhood of Cleveland and enjoys Cleveland sports, volleyball, golf, traveling and being on Lake Erie.

### EMILY APPELBAUM

*Art Director*

Emily graduated from Yale University with a degree in architecture and is newly returned to Cleveland from the San Francisco Bay Area, where she helped make places awesome through collaborative design, large-scale public art, earthshaking events and outreach to underserved communities. She also wrote, edited and designed for the late, great San Francisco Bay Guardian, and is currently working as Program Director at **Ingenuity Cleveland**.

## MUSIC LIAISONS

- **Brent Kirby**
- **Jason Patrick Meyers**
- **Wallace Settles**



Join our email newsletter



**SIGN UP**

We respect your privacy.

[Blog](#)

[Contact](#)

[Become a Sponsor](#)

[Brite Team](#)

Copyright © 2024 – Brite Winter is cultivated by Brite Cleveland, a 501(c)(3) organization.

Illustrations by Randy Crider.